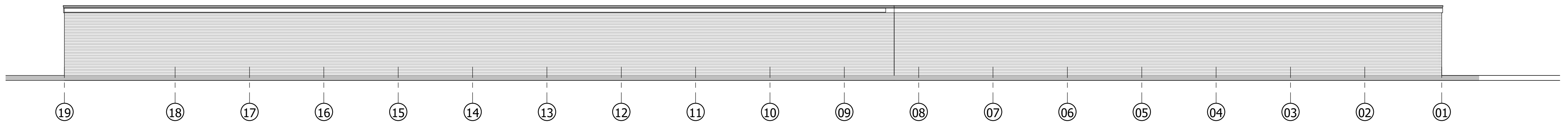
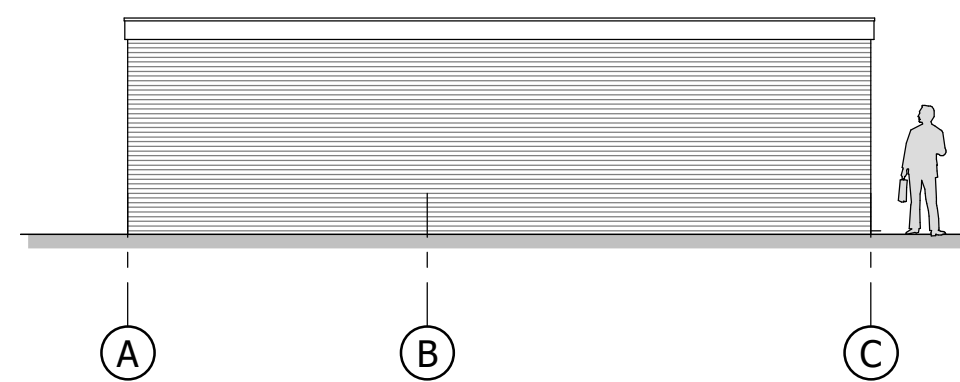


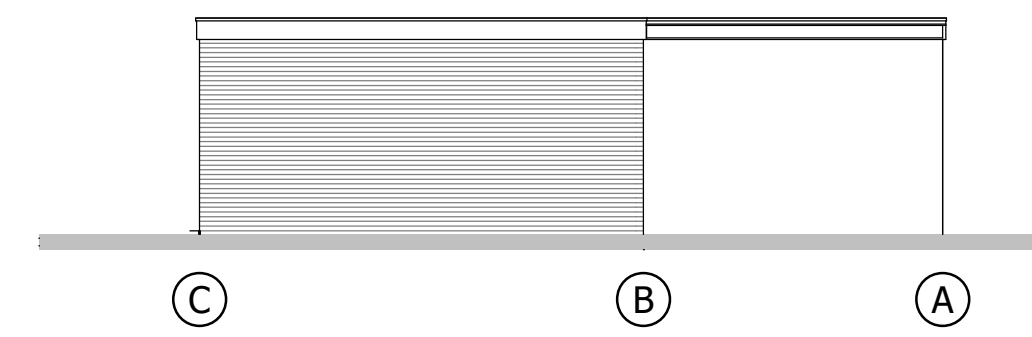
Voorgevel



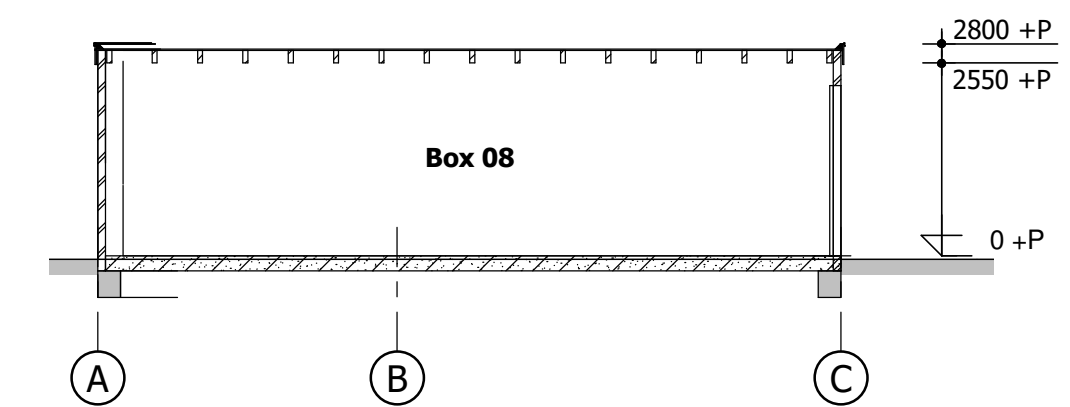
Achtergevel



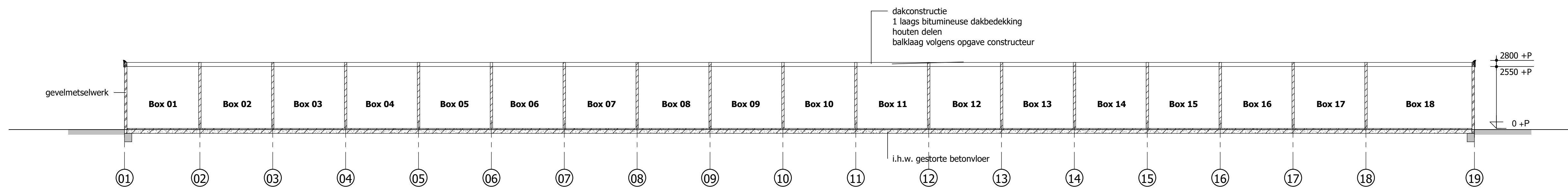
Linker gevel



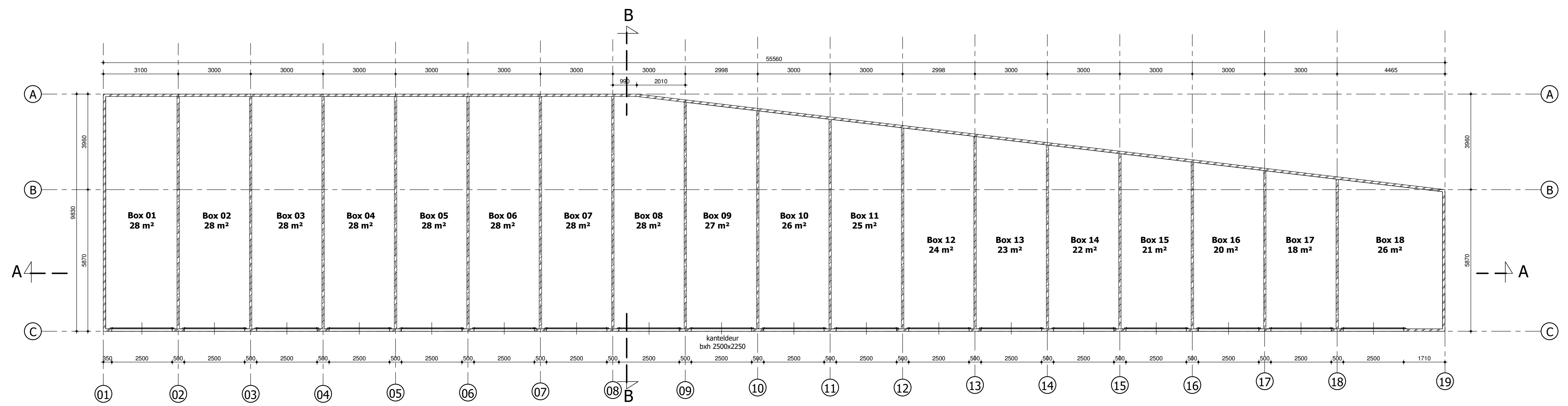
Rechter gevel



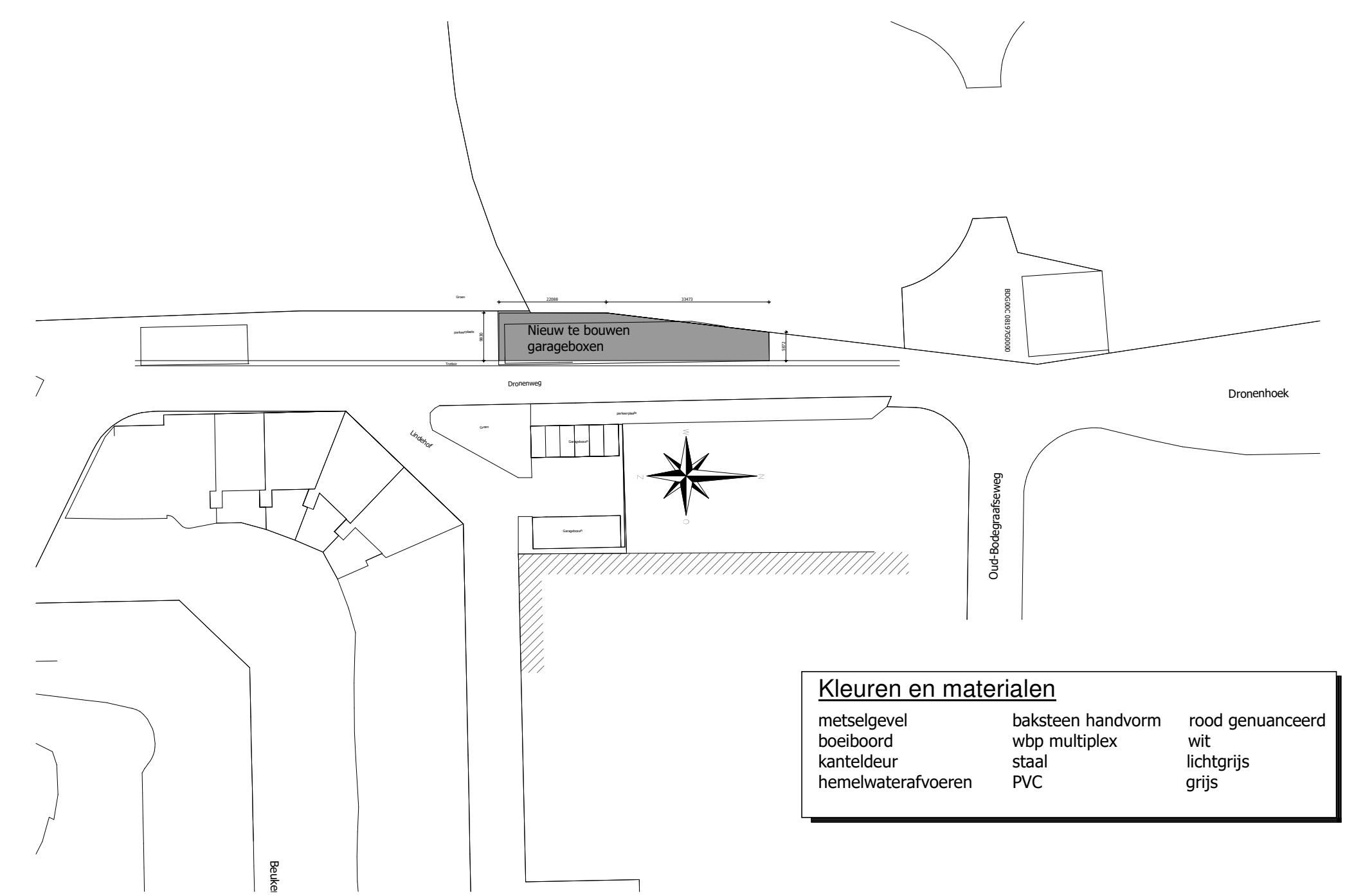
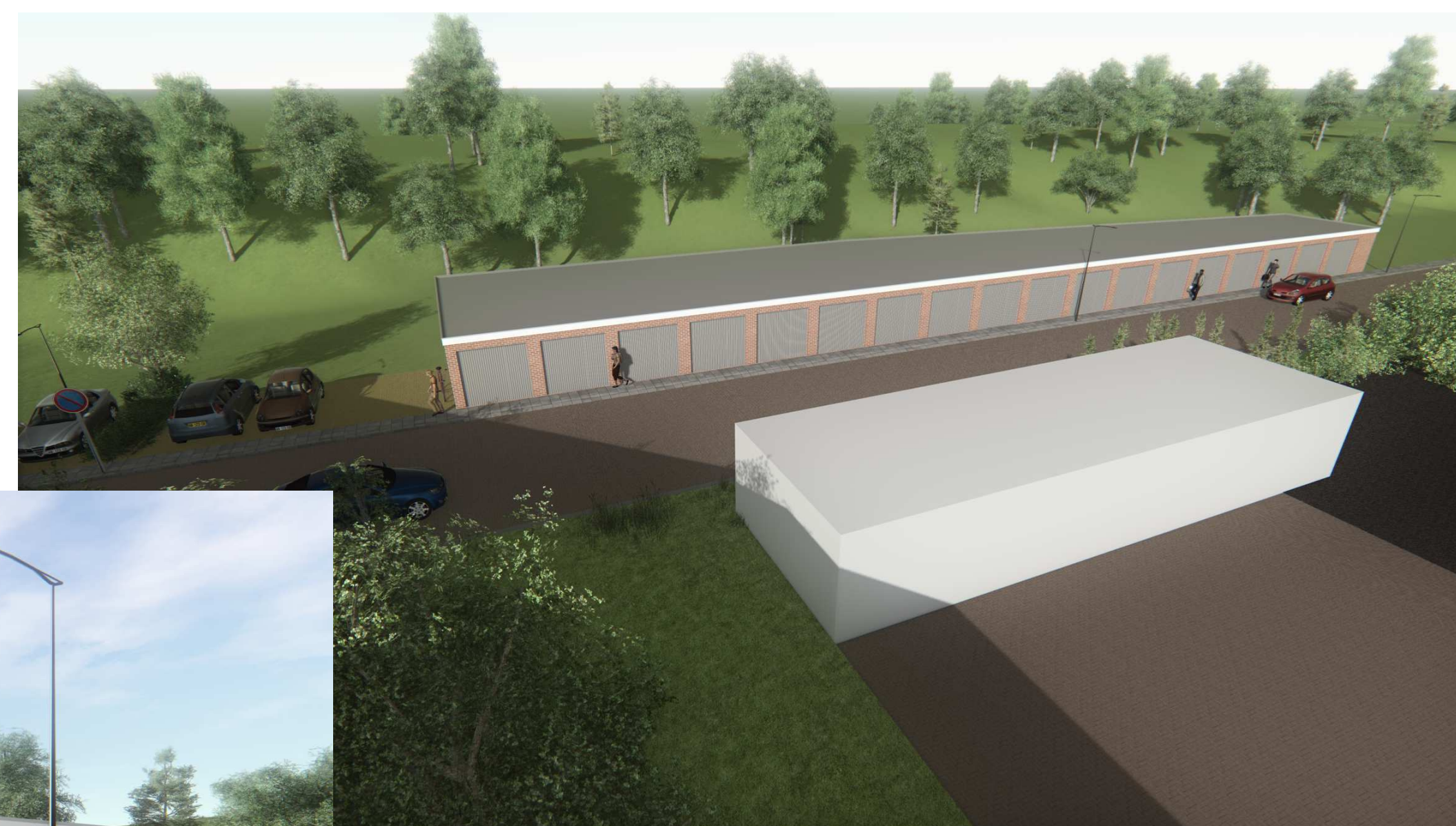
Doorsnede B-B



Doorsnede A-A



Begane grond



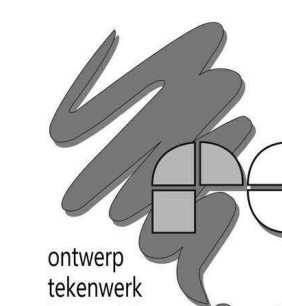
Situatie

Kleuren en materialen		
metselgevel	baksteen handvorm	rood genceanceerd
boetboord	wtp multiplex	wit
kanteldeur	staal	lichtgrijs
hemelwaterafvoeren	PVC	grijs

Bestektekening

Nieuwbouw 18 garageboxen
Dronenweg 6
te Bodegraven

dossier: 854
tekening: B-1
schaal: 1:100/1000
formaat: A1
datum: 30-08-2017
laatste wijz.



RDG ontwerp & advies
Tjalk 32
tel: 0172 611878
info@rdgontwerp.nl

Landdijk VOF
Beneluxweg 18
2411 NG Bodegraven